



Comune di Fanano

Provincia di Modena

Piano Regolatore Generale

ADOTTATO CON DELIBERA CONSILIARE N. 55 DEL 30.09.2000
APPROVATO CON DELIBERA DI GIUNTA PROVINCIALE N. 317 DEL 01.08.2003

VARIANTE SPECIFICA

ai sensi dell'art. 15, comma 4 della L.R. 47/78 e s.m.i. - art. 4 comma 4 L.R. 24/2017

ADOTTATA con deliberazione del Consiglio Comunale n° ____ del ____

APPROVATA con deliberazione del Consiglio Comunale n° ____ del ____

TAVOLE SINOTTICHE TDU

Raffronto: PRG vigente - Variante



DATA: Dicembre 2020

SINDACO
Stefano Muzzarelli

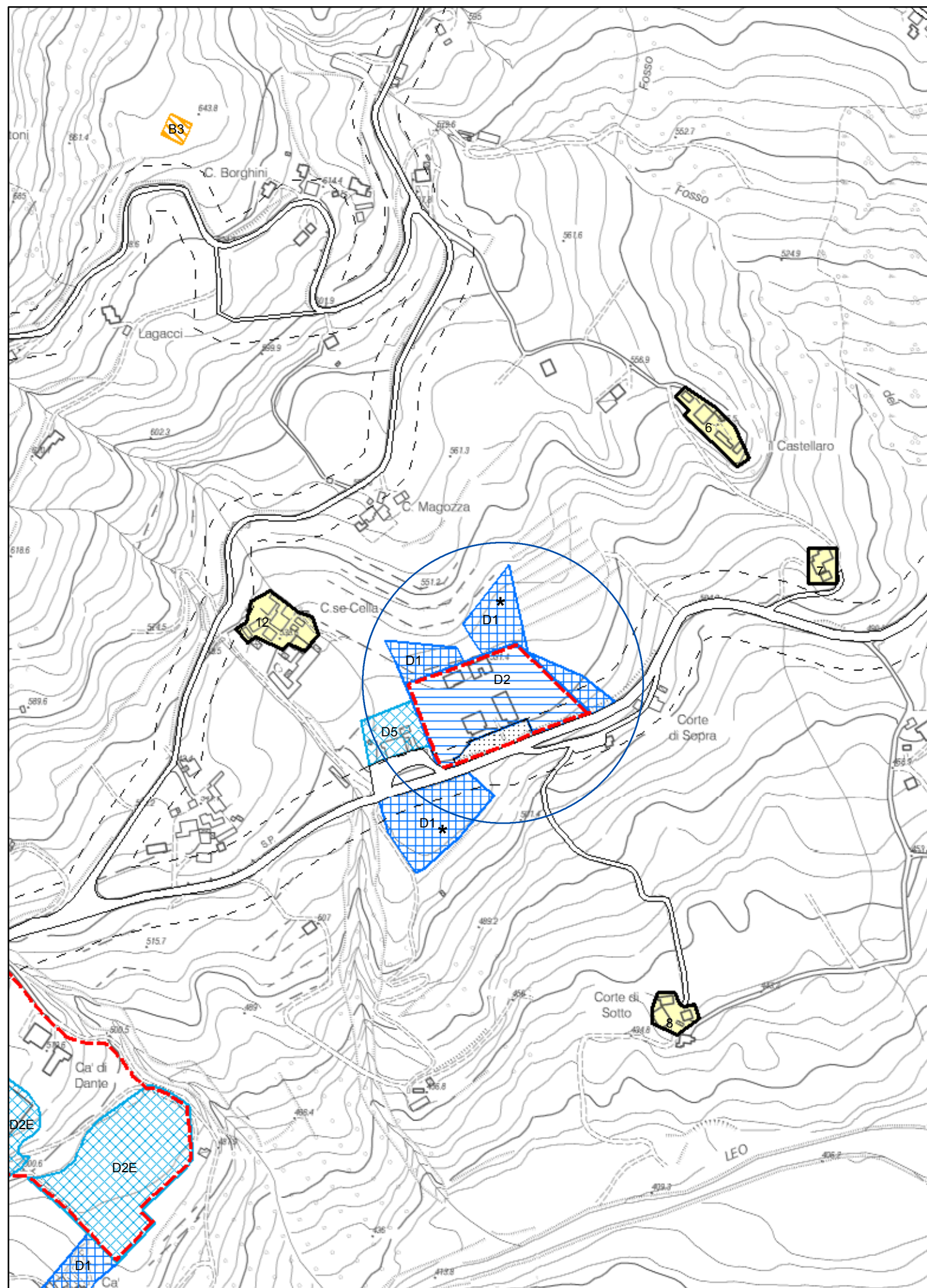
DIRIGENTE RESPONSABILE DELL'AREA
Ing. Massimo Florini

PROGETTO:
Ing. Massimo Florini

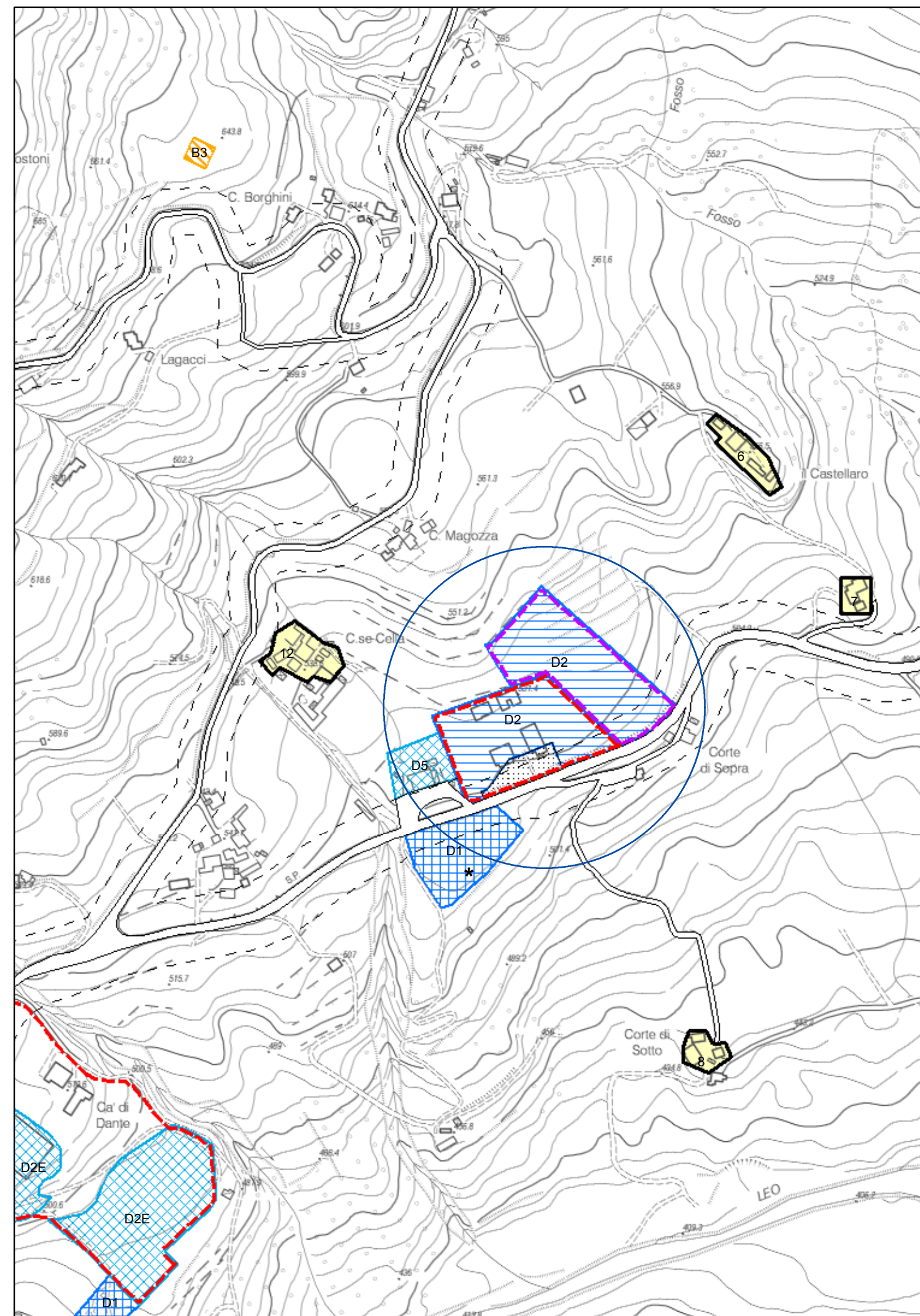
ELABORAZIONI CARTOGRAFICHE - GIS: STUDIOUNDICI - Dott. Fabrizio Colacino

Modifica n. 1

PRG proposta variante

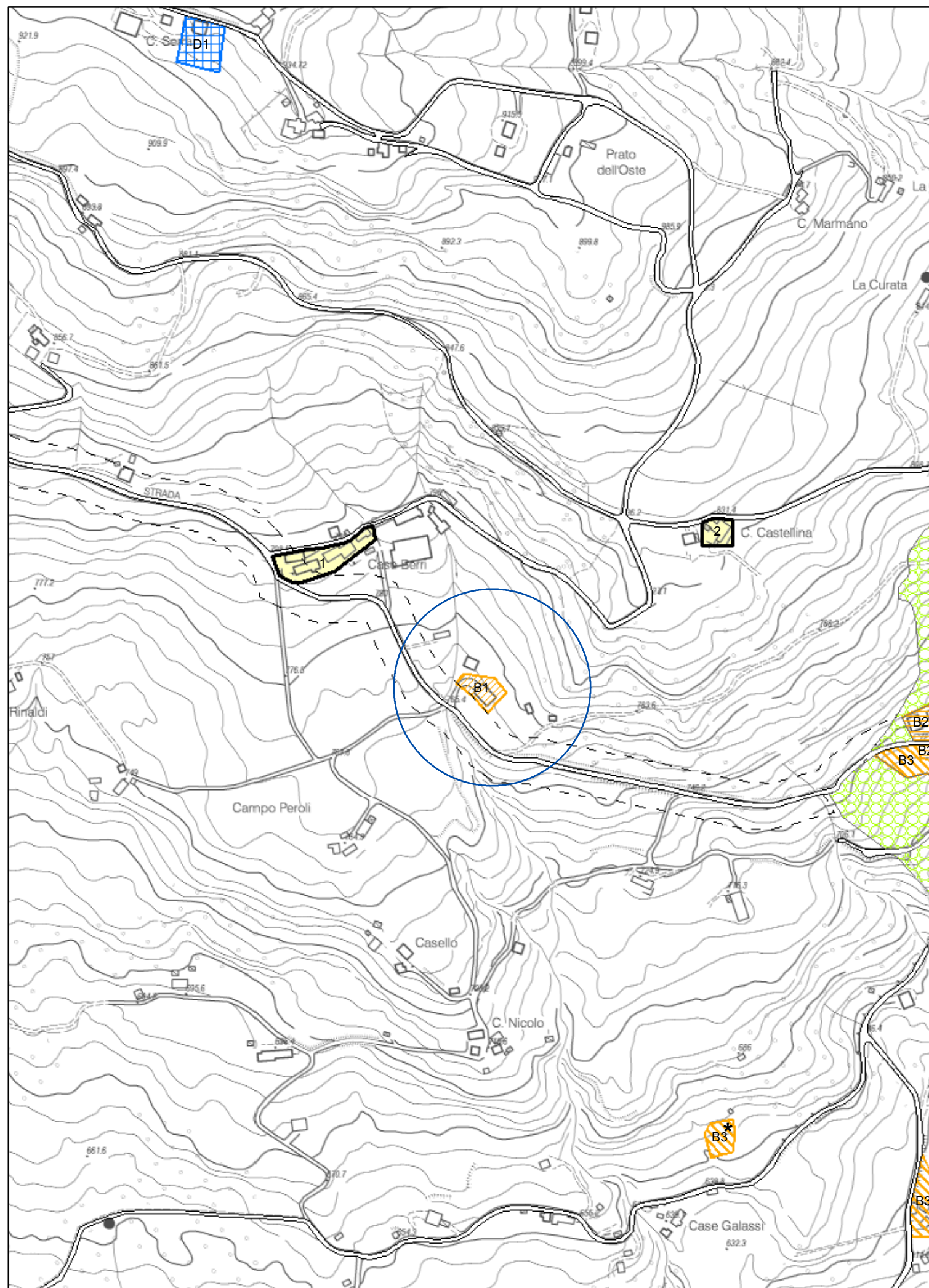


PRG vigente

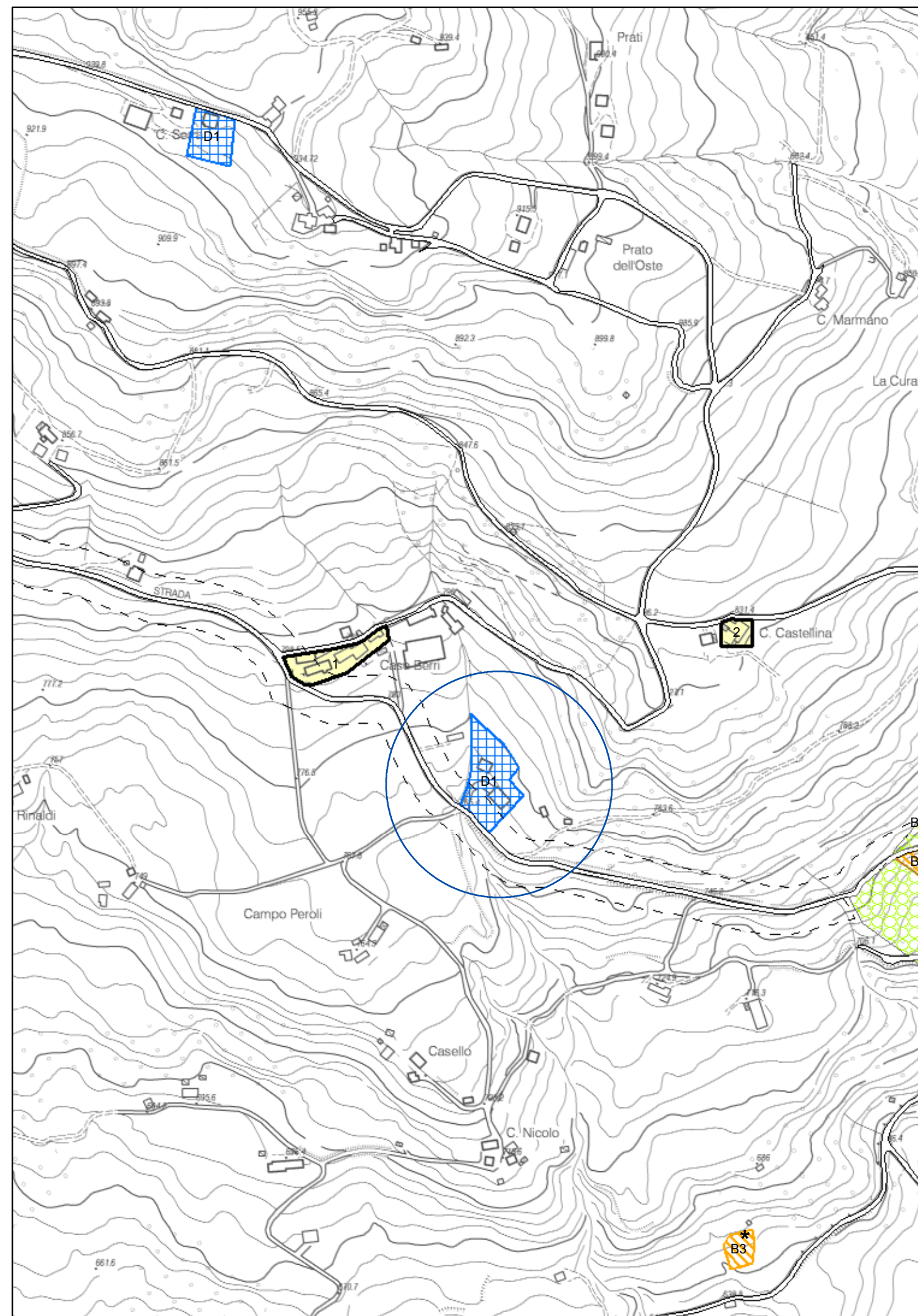


Modifica n. 2

PRG proposta variante

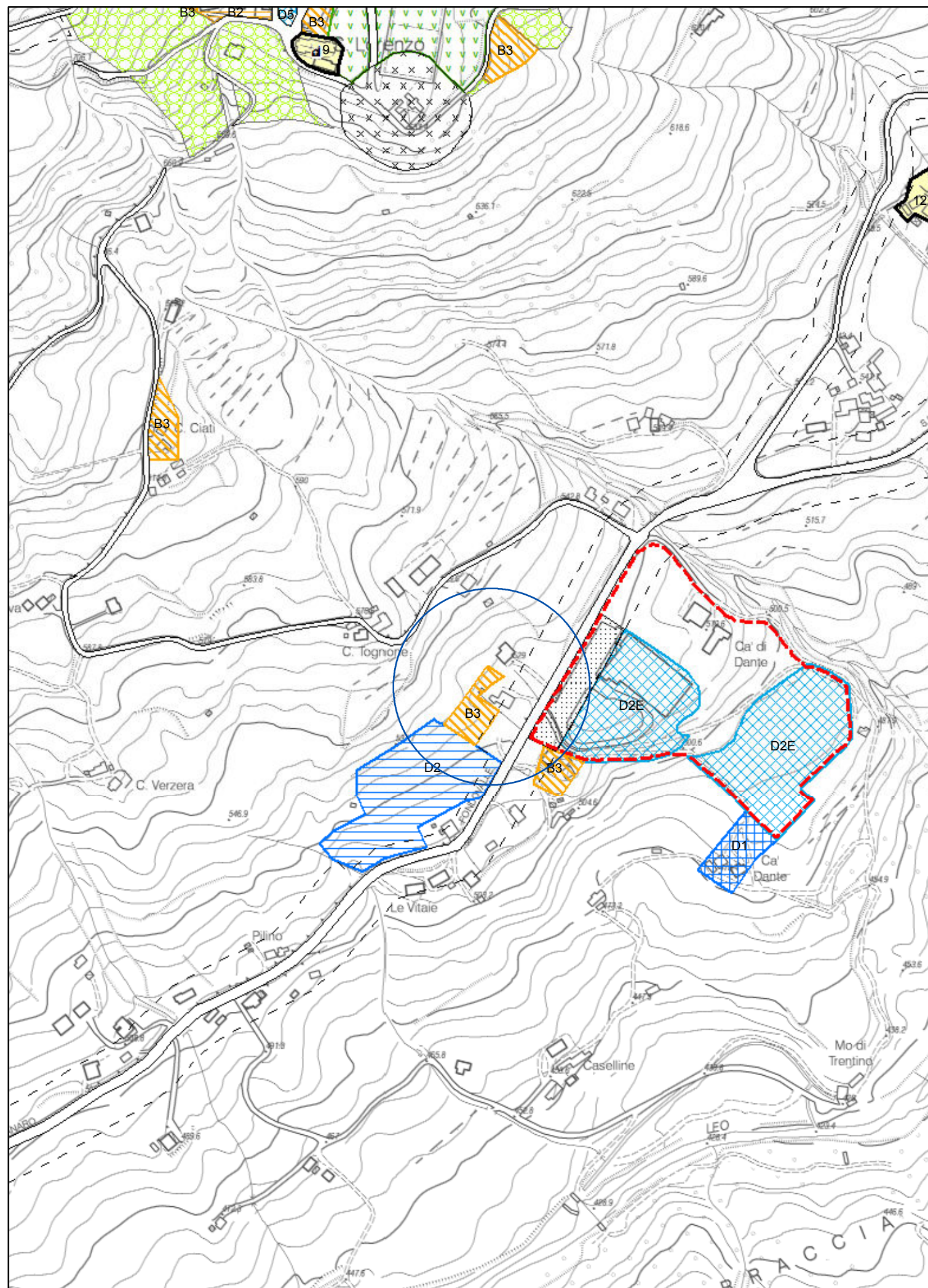


PRG vigente

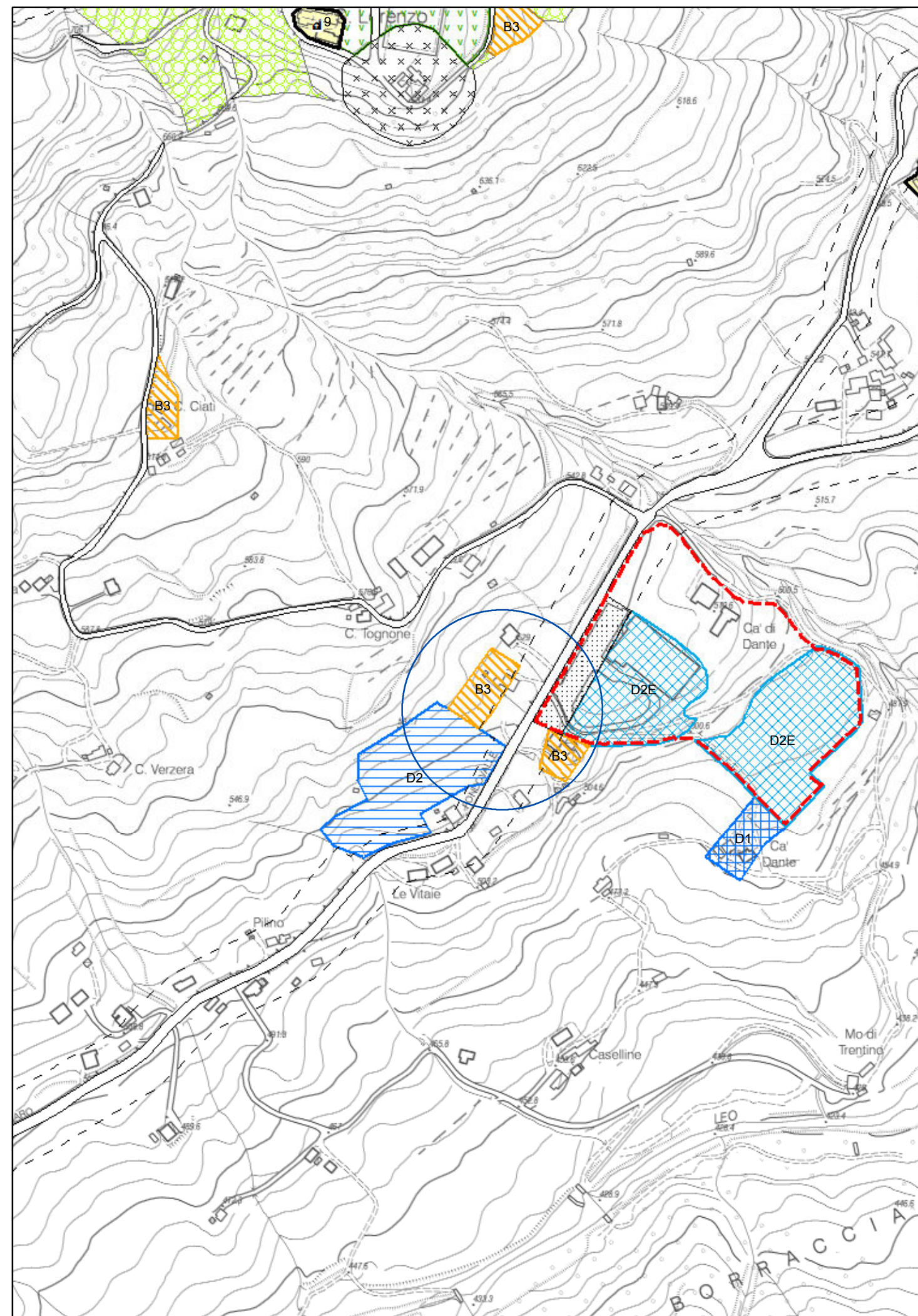


Modifica n. 3

PRG proposta variante

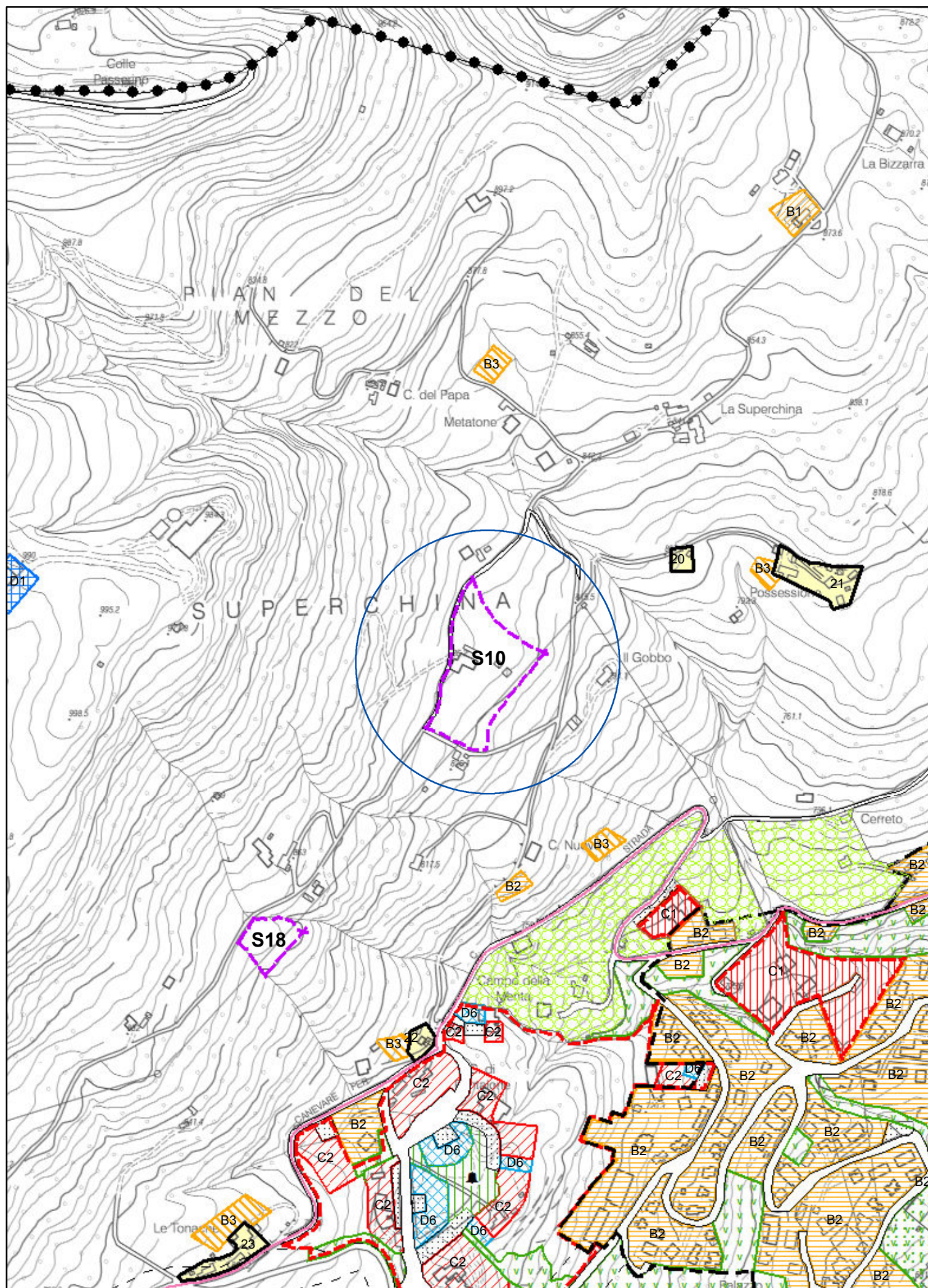


PRG vigente

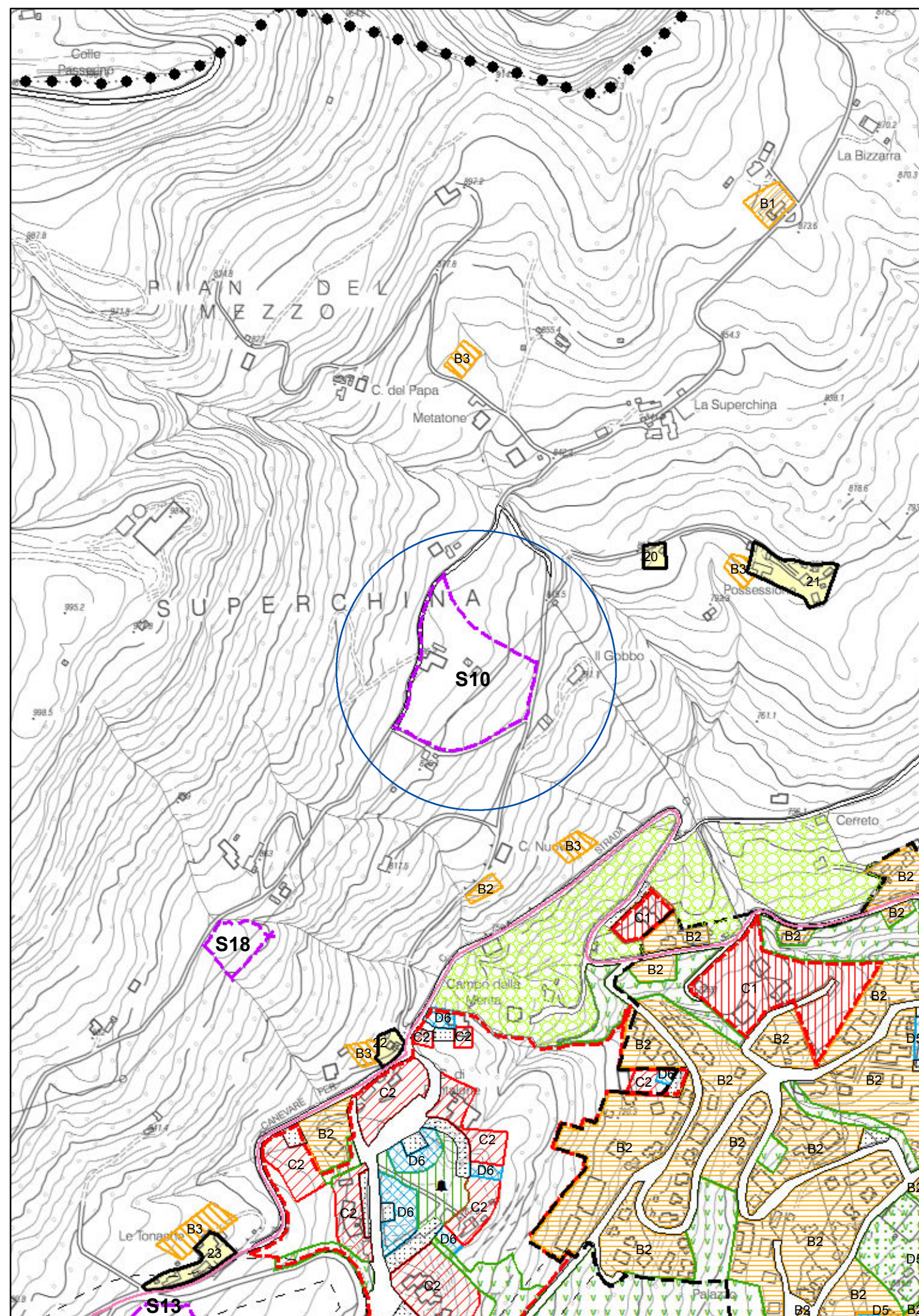


Modifica n. 4

PRG proposta variante

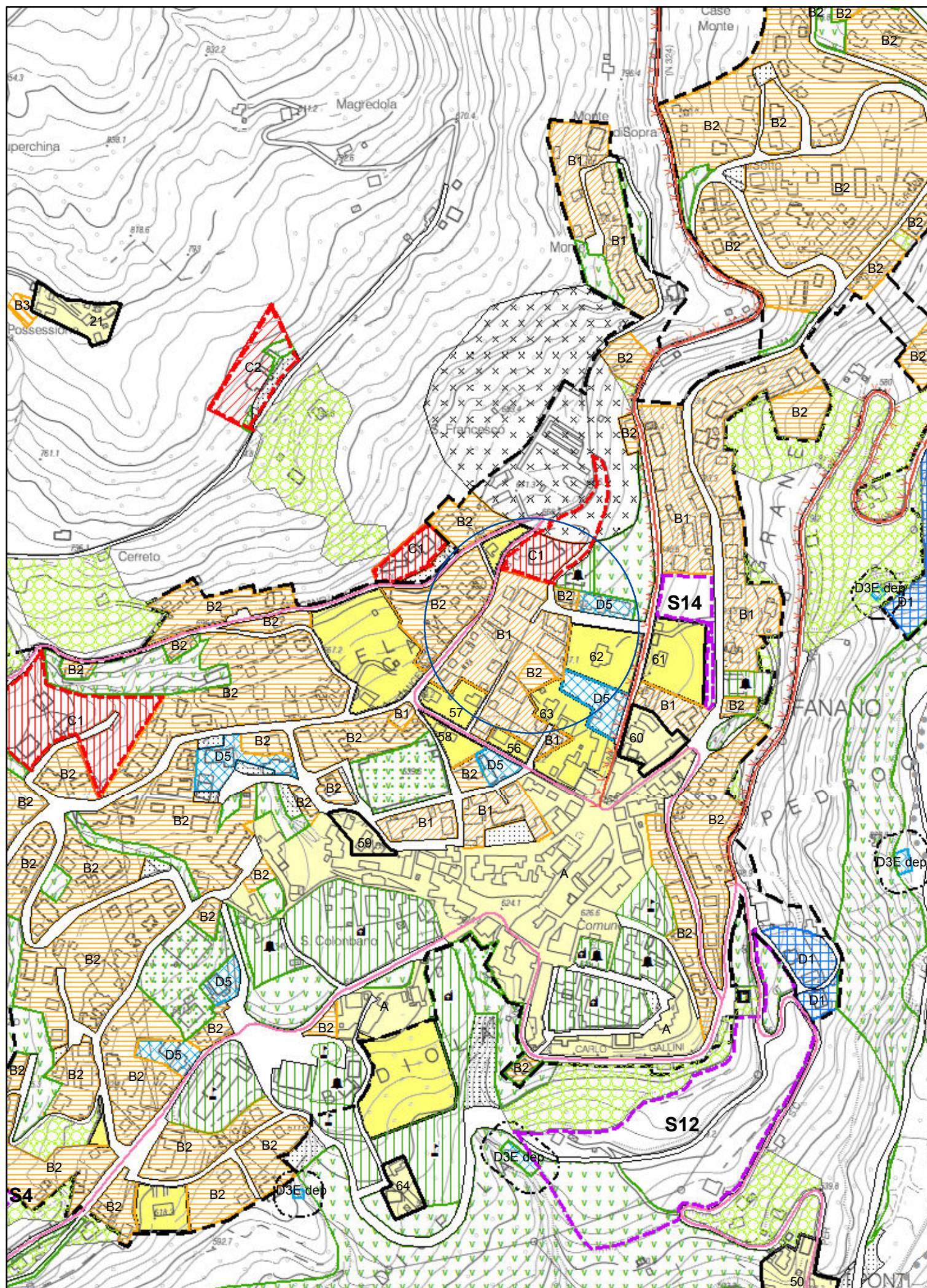


PRG vigente

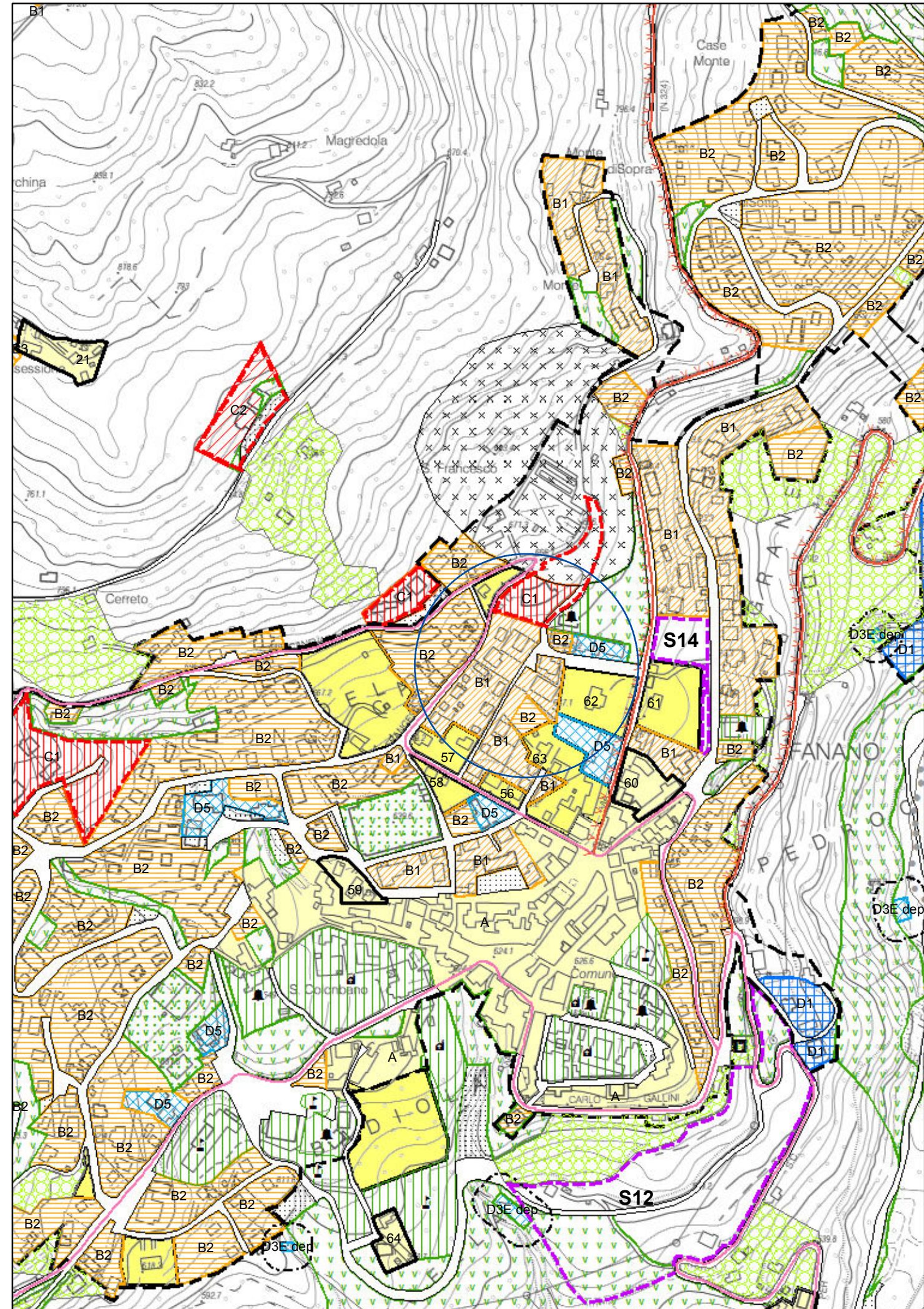


Modifica n. 5

PRG proposta variante

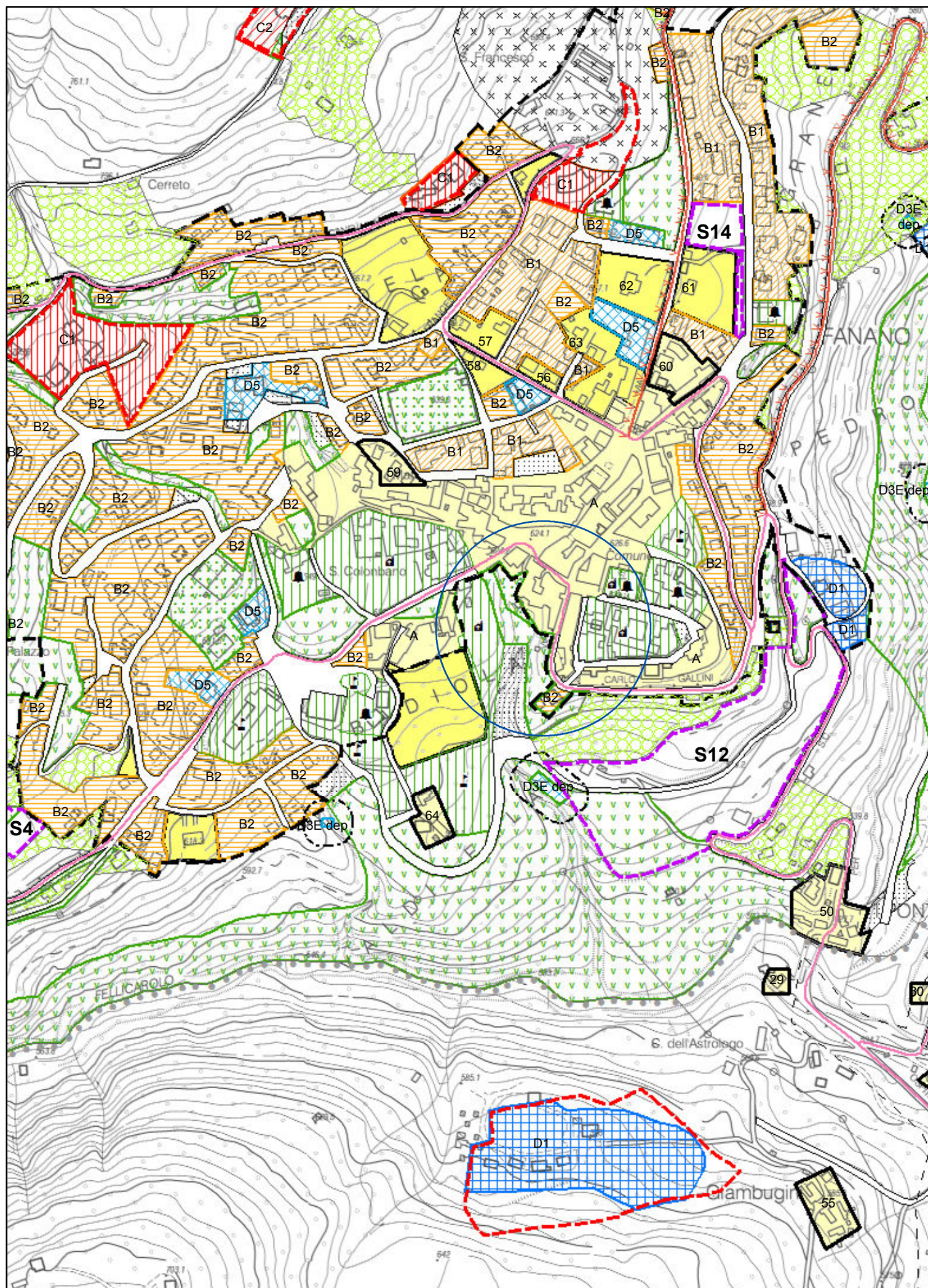


PRG vigente

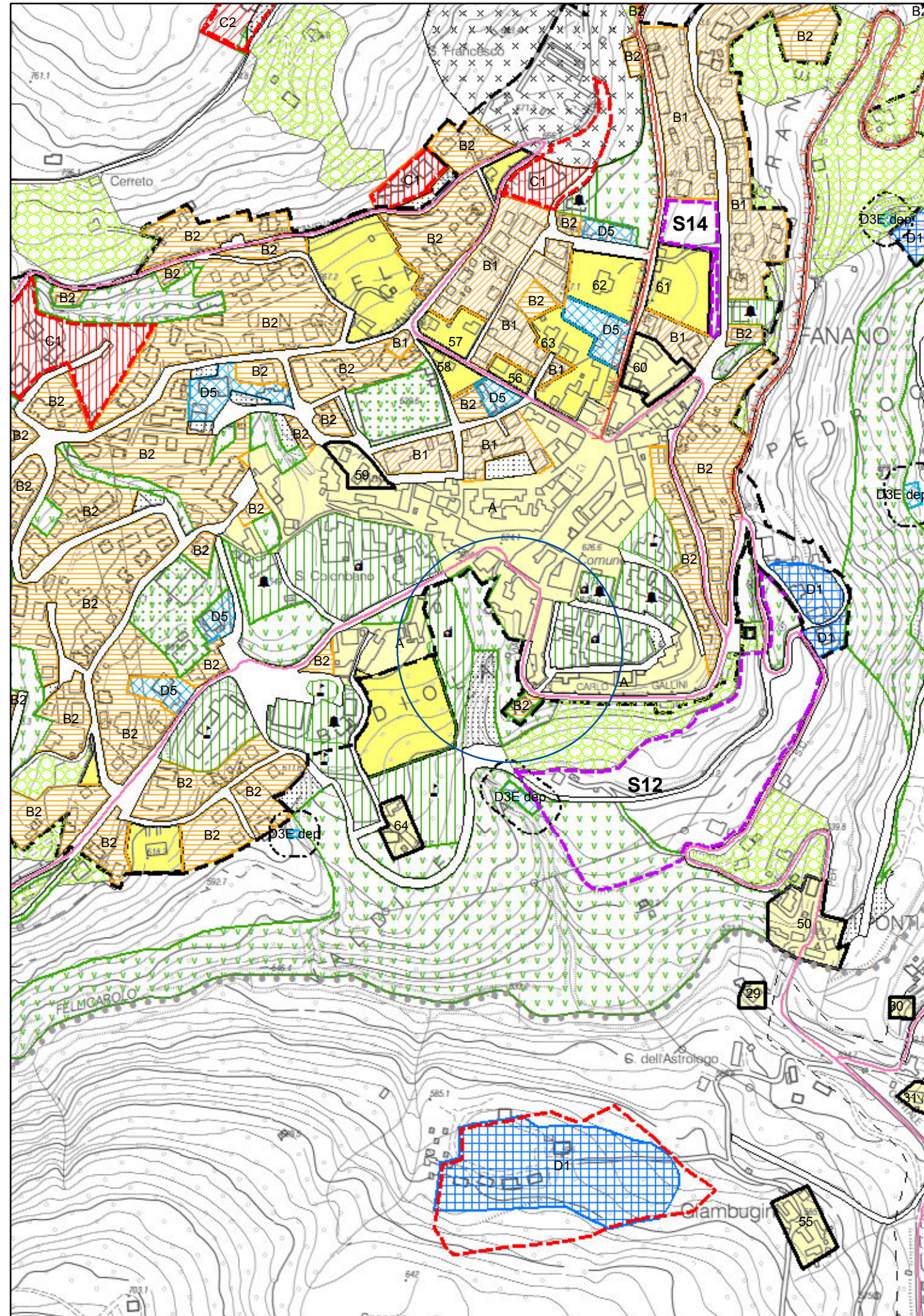


Modifica n. 6

PRG proposta variante

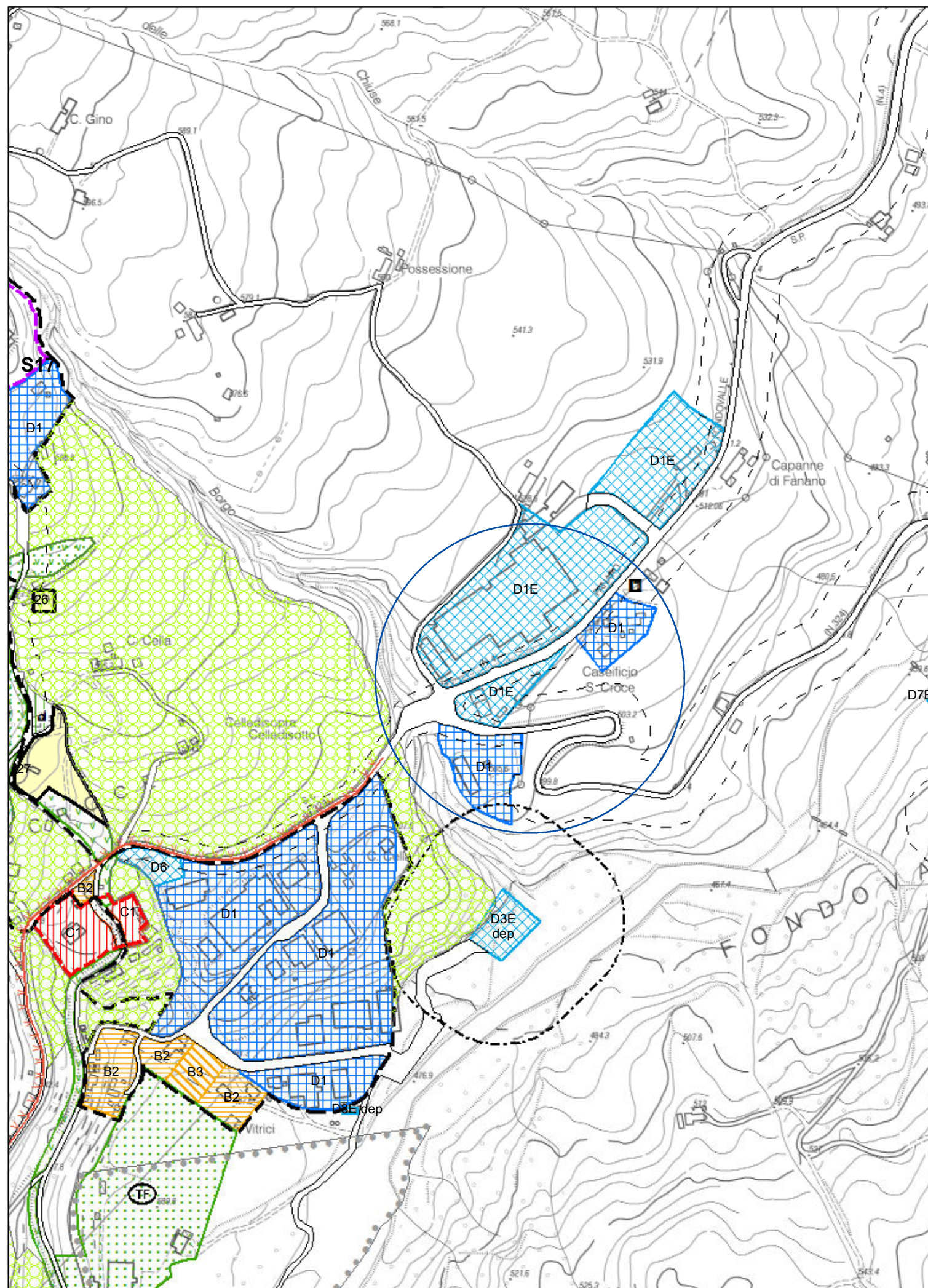


PRG vigente

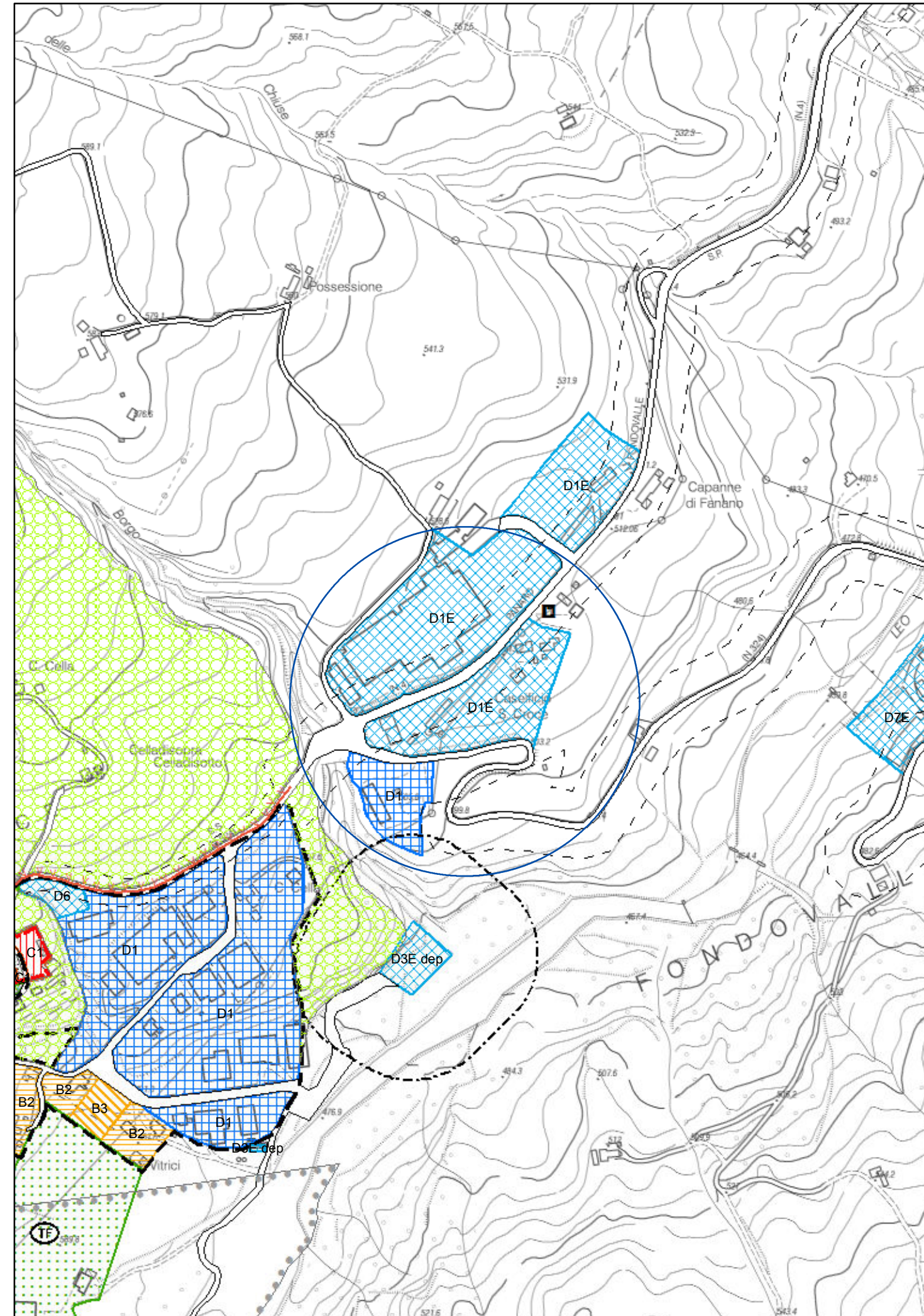


Modifica n. 7

PRG proposta variante

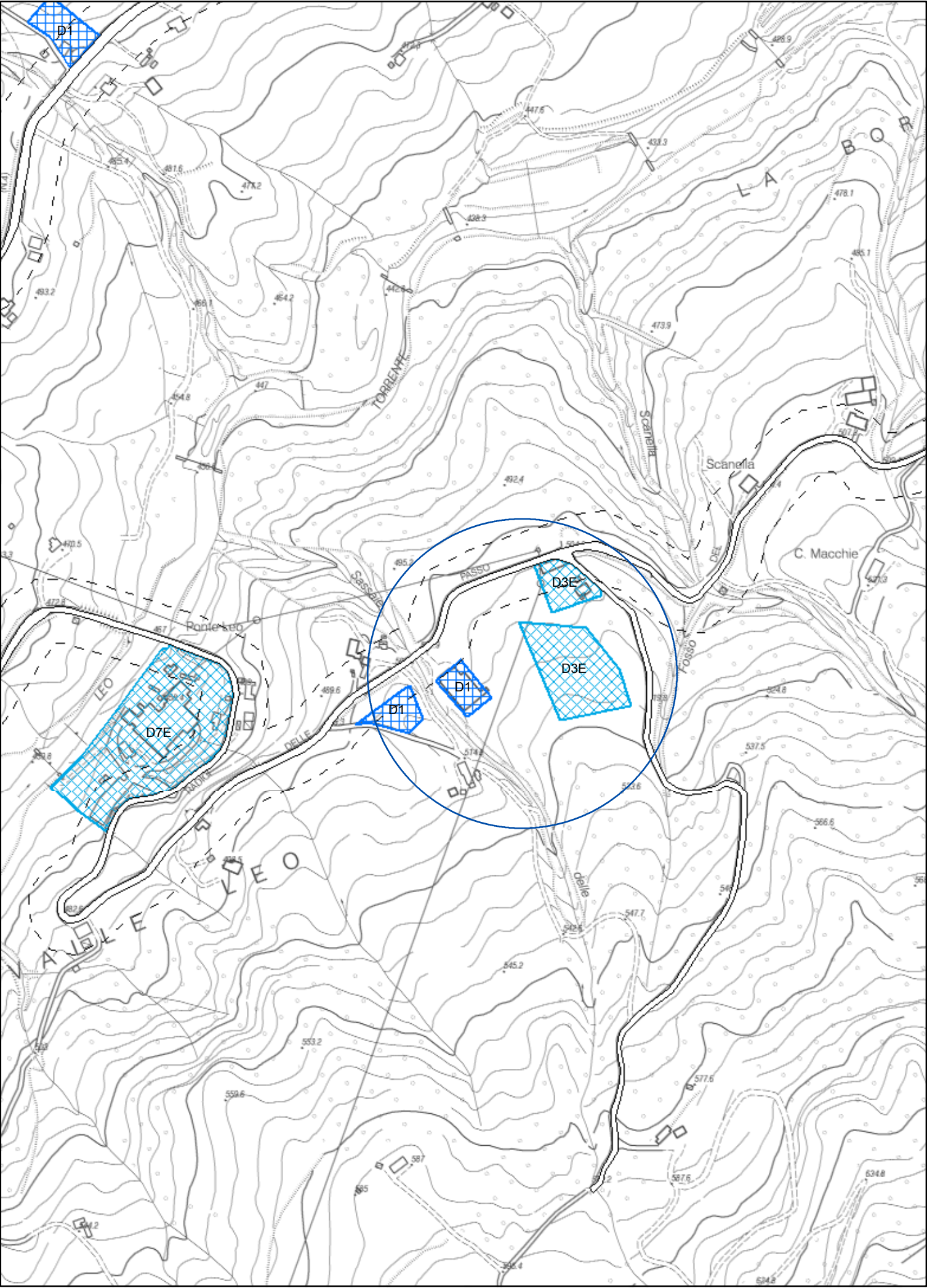


PRG vigente

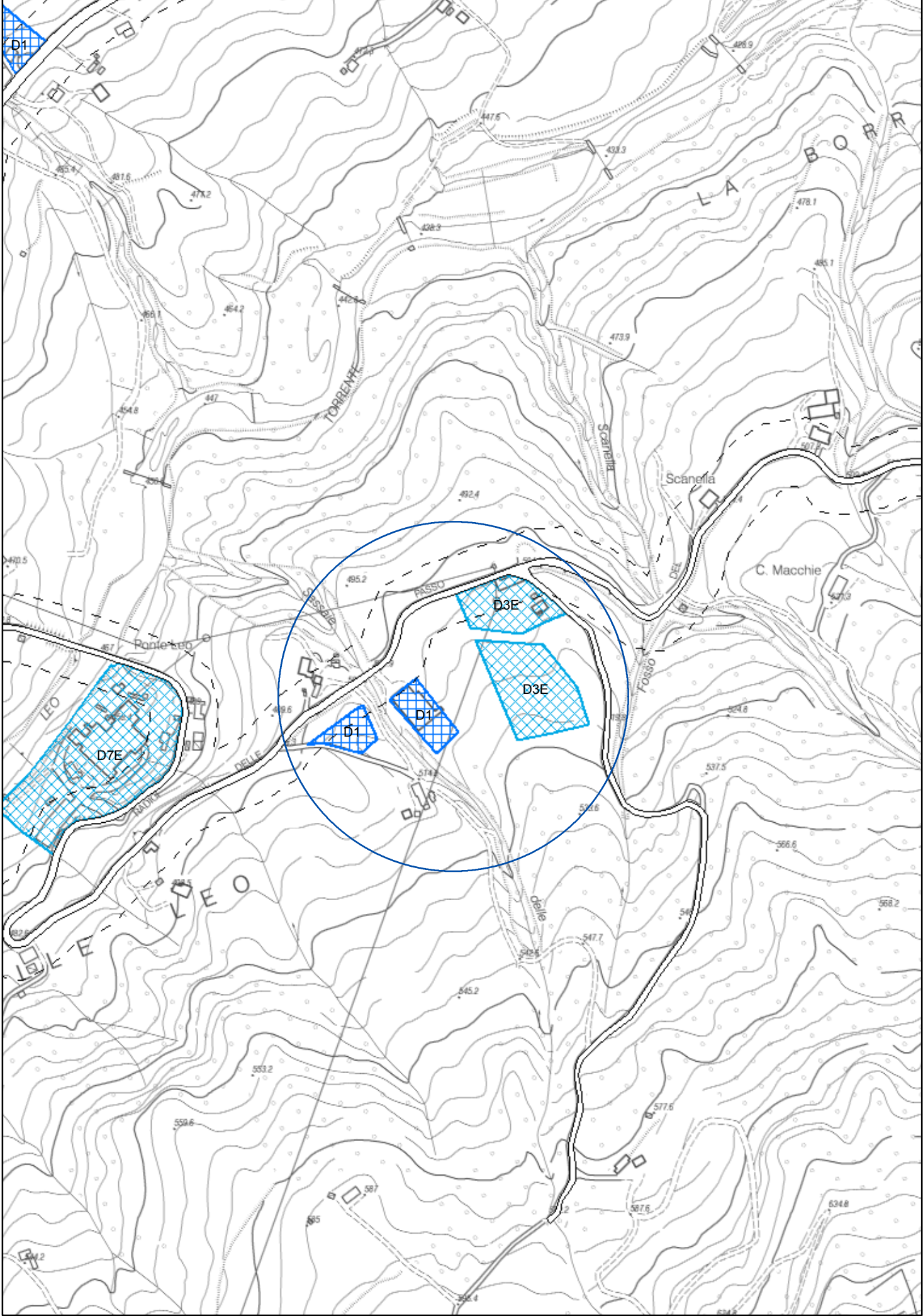


Modifica n. 8

PRG proposta variante

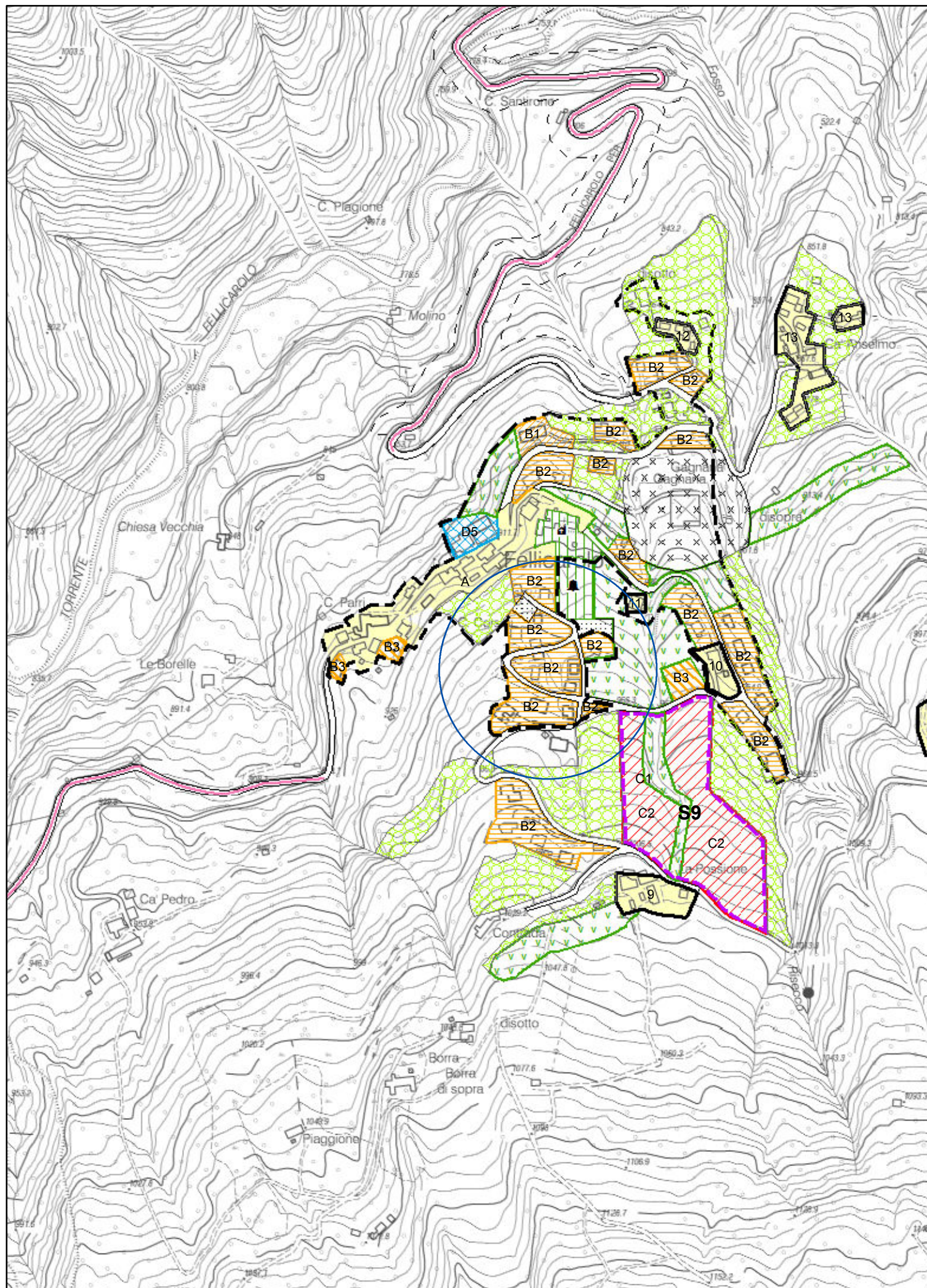


PRG vigente

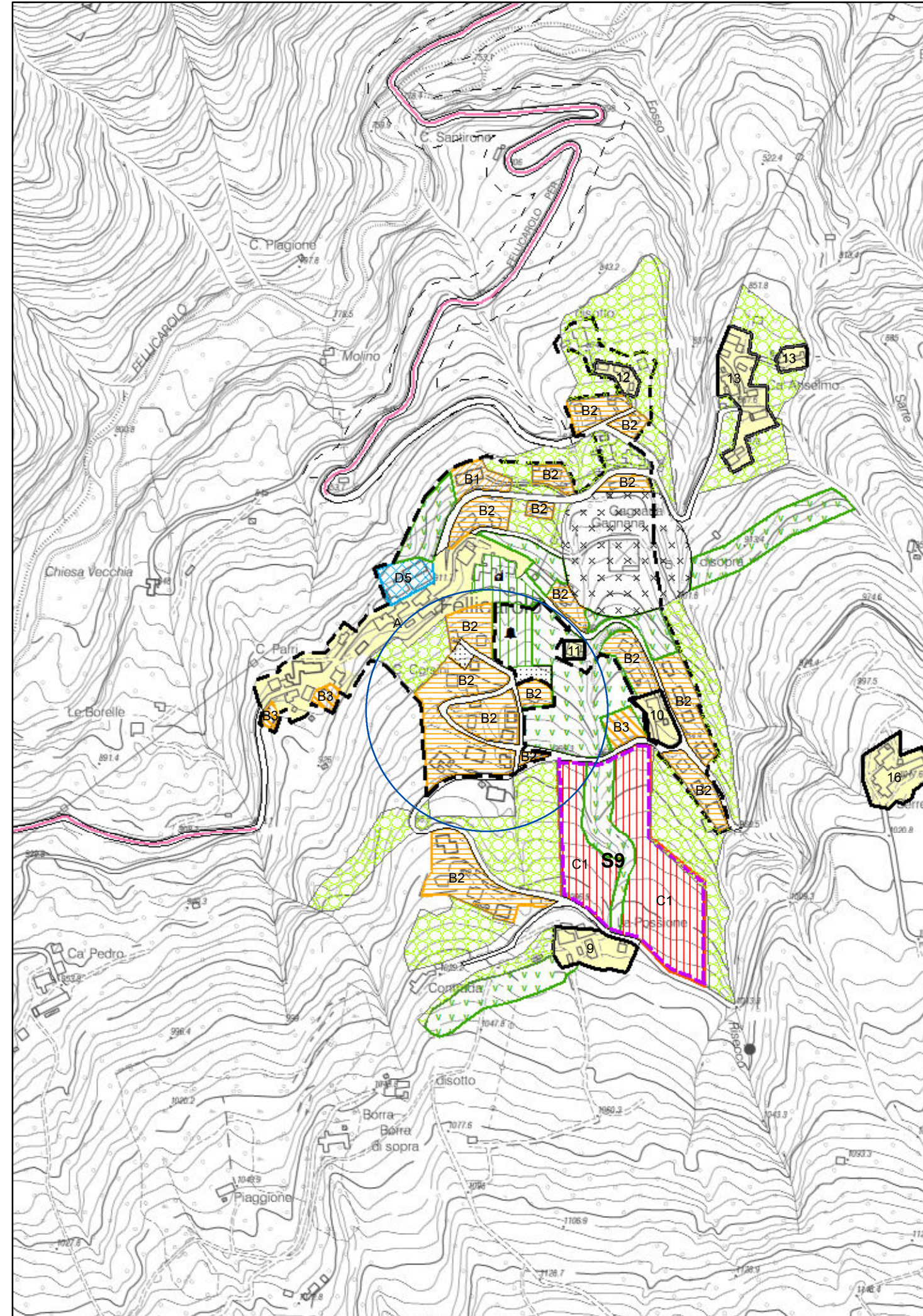


Modifica n. 9

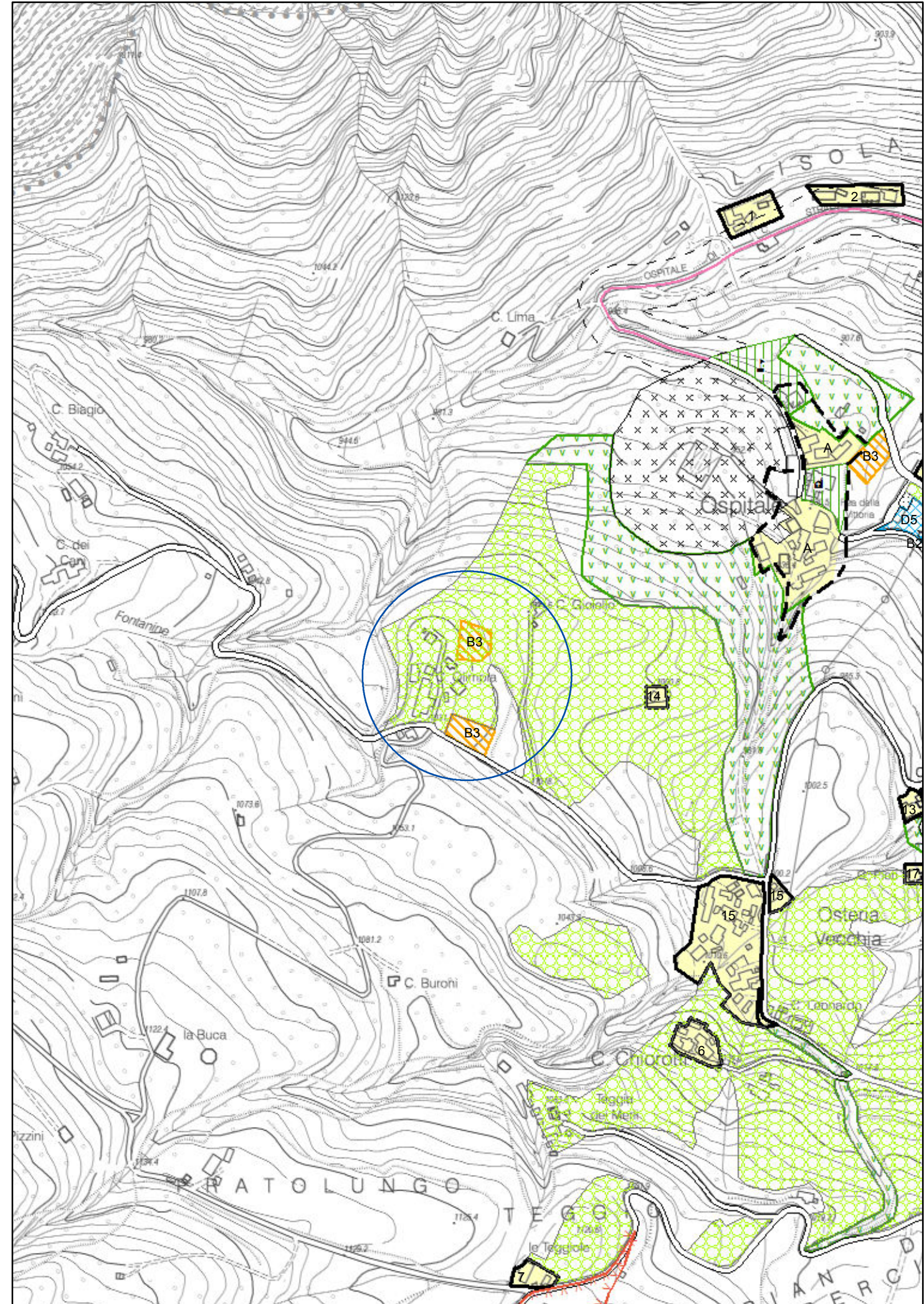
PRG proposta variante



PRG vigente



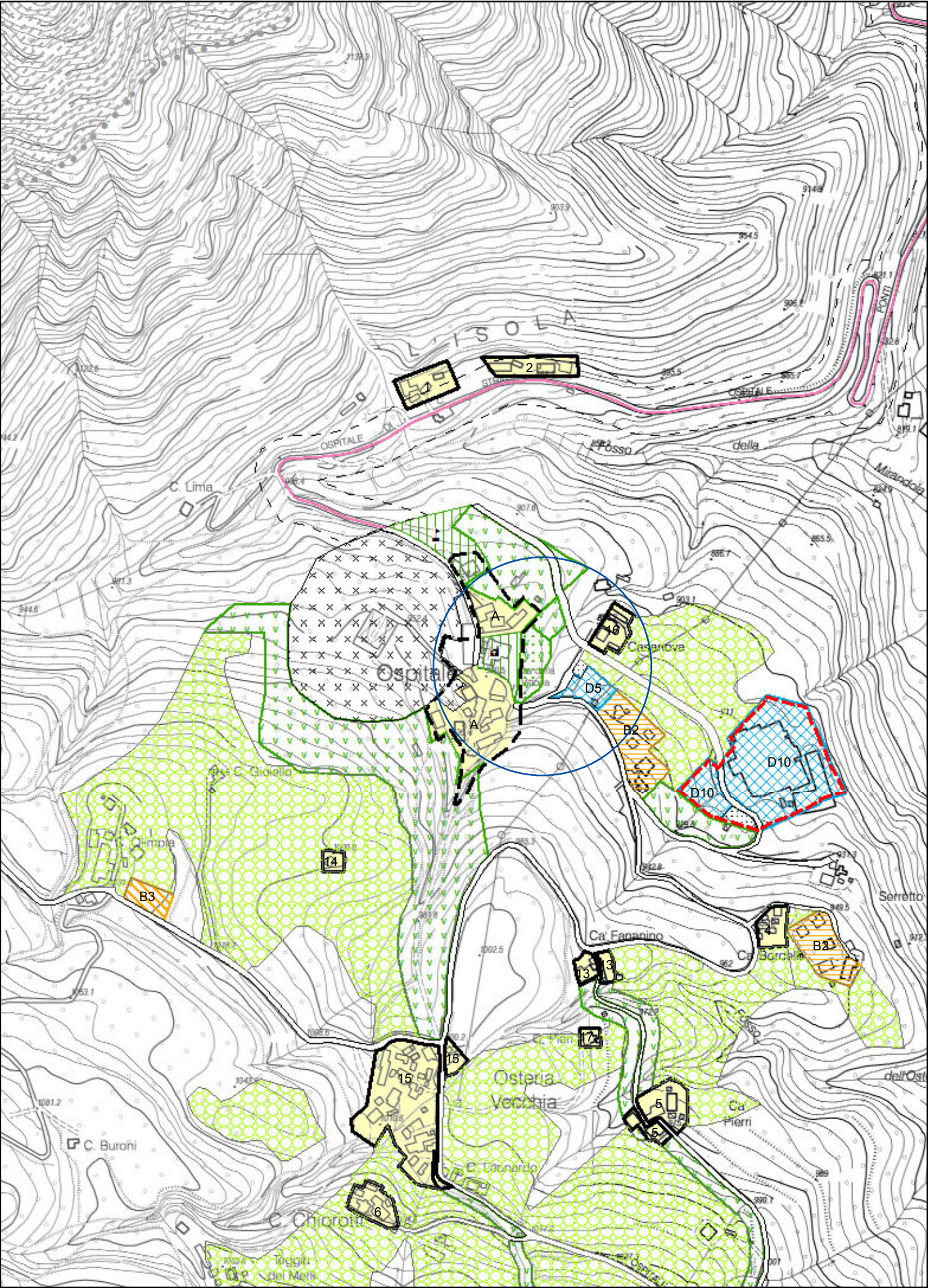
PRG proposta variante



The map is a detailed topographic representation of a mountainous region. It features numerous contour lines indicating elevation, with labels such as 1044.2, 1027.8, 1041.3, 1040.8, 1073.6, 1053.1, 1081.2, 1107.8, 1122.1, 1134.4, 1154.4, and 1156.2. Key locations marked include C. Lima, C. Biagio, C. del Con, Fontanipe, C. Burohi, la Buca, C. Chioroli, and Osteria Vecchia. A blue circle highlights a specific area near C. Giallo, which contains two orange rectangular markers labeled B3. Other markers include A, B2, B3, D5, and 14. The map also shows a road network and a railway line. The text 'ISOLA' is visible at the top right, and 'PATOLUNGO' and 'TEGGIO' are visible at the bottom. The map is oriented with North at the top.

Modifica n. 11

PRG proposta variante



PRG vigente

